

SUBMITTAL RECORD		
NO.	DATE	DESCRIPTION

REVISION RECORD		
NO.	DATE	DESCRIPTION

LEGEND

LETTER OF MAP AMENDMENT (LOMA) BOUNDARY
 100 YR BASE FLOOD MARK (ELEV. 607.9)

IN
 APPENDIX
 D

* HAND SIGNATURE ON FILE



Civil & Environmental Consultants, Inc.
 8740 Orion Place, Suite 100 - Columbus, OH 43240
 Ph: 614.540.6633 • 888.598.6808 • Fax: 614.540.6638
 www.cecinc.com

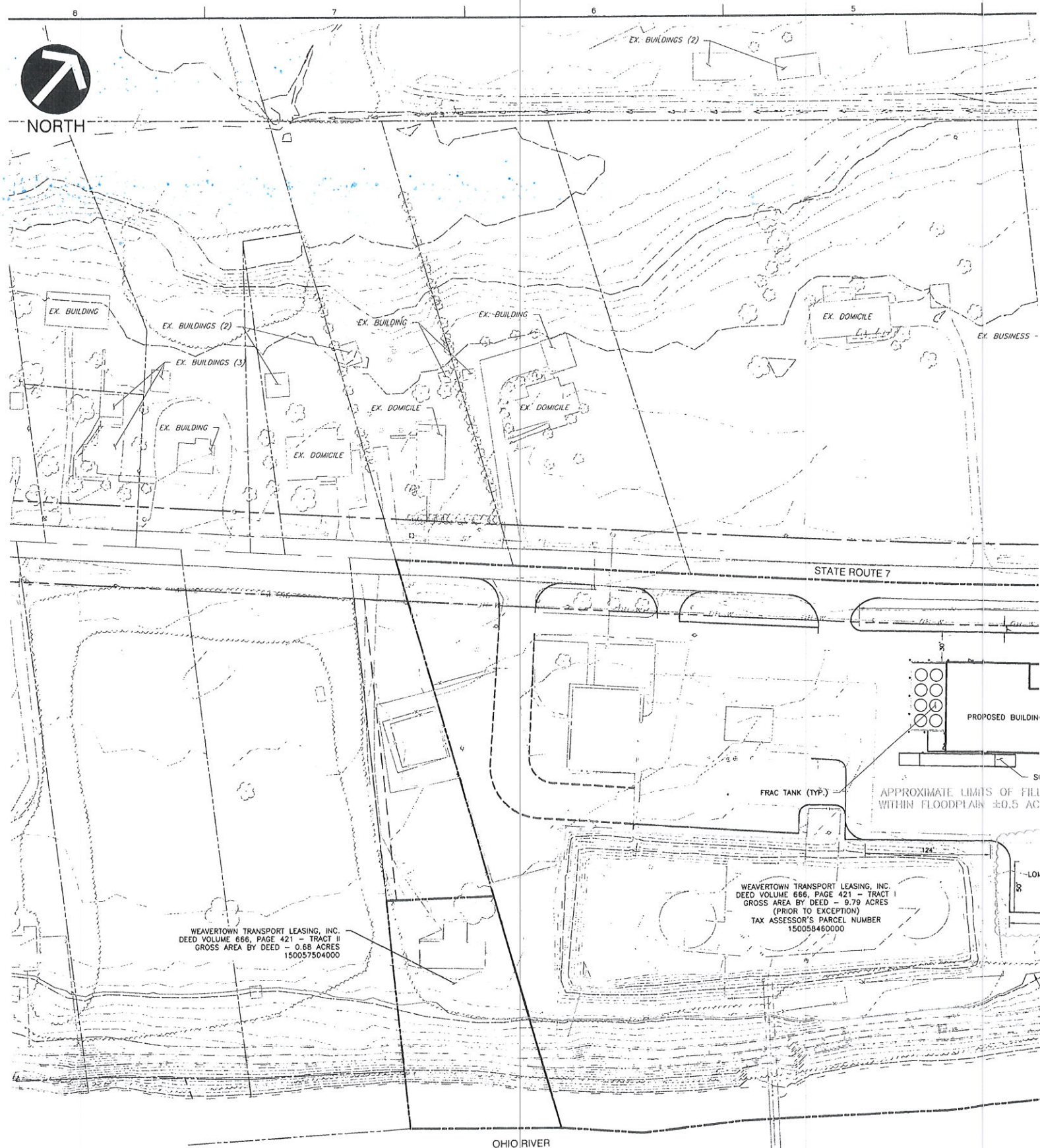
**WEAVERTOWN TRANSPORT LEASING, INC.
 FLOODPLAIN DEVELOPMENT
 PERMIT APPLICATION
 NEW MATAMORAS, OHIO**

DRAWN BY: JMK	CHECKED BY: JSC	APPROVED BY: *RAS
DATE: JULY 2012	DWG SCALE: 1"=60'	PROJECT NO: 112-048

FILL EXHIBIT



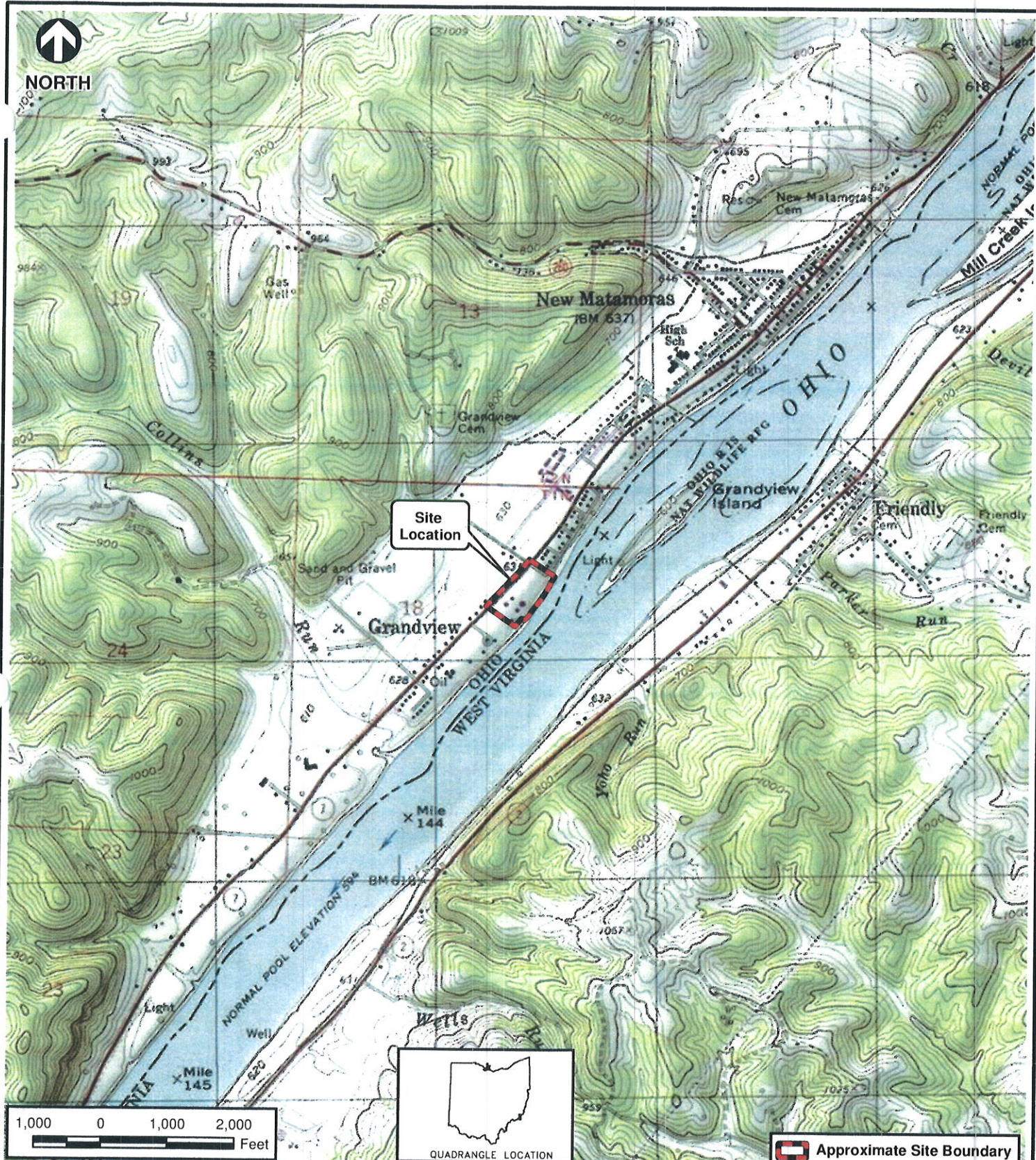
NORTH



REFERENCE

1. TOPOGRAPHIC MAPPING BY HENDERSON AERIAL SERVICES, INC. FROM PHOTOGRAPHY DATED 12/08/2011.

2. ADDITIONAL TOPO SURVEY BY CIVIL AND ENVIRONMENTAL CONSULTANTS, INC. COMPLETED ON 12/21/2011.



Civil & Environmental Consultants, Inc.

8740 Orion Place, Suite 100 - Columbus, Ohio 43240

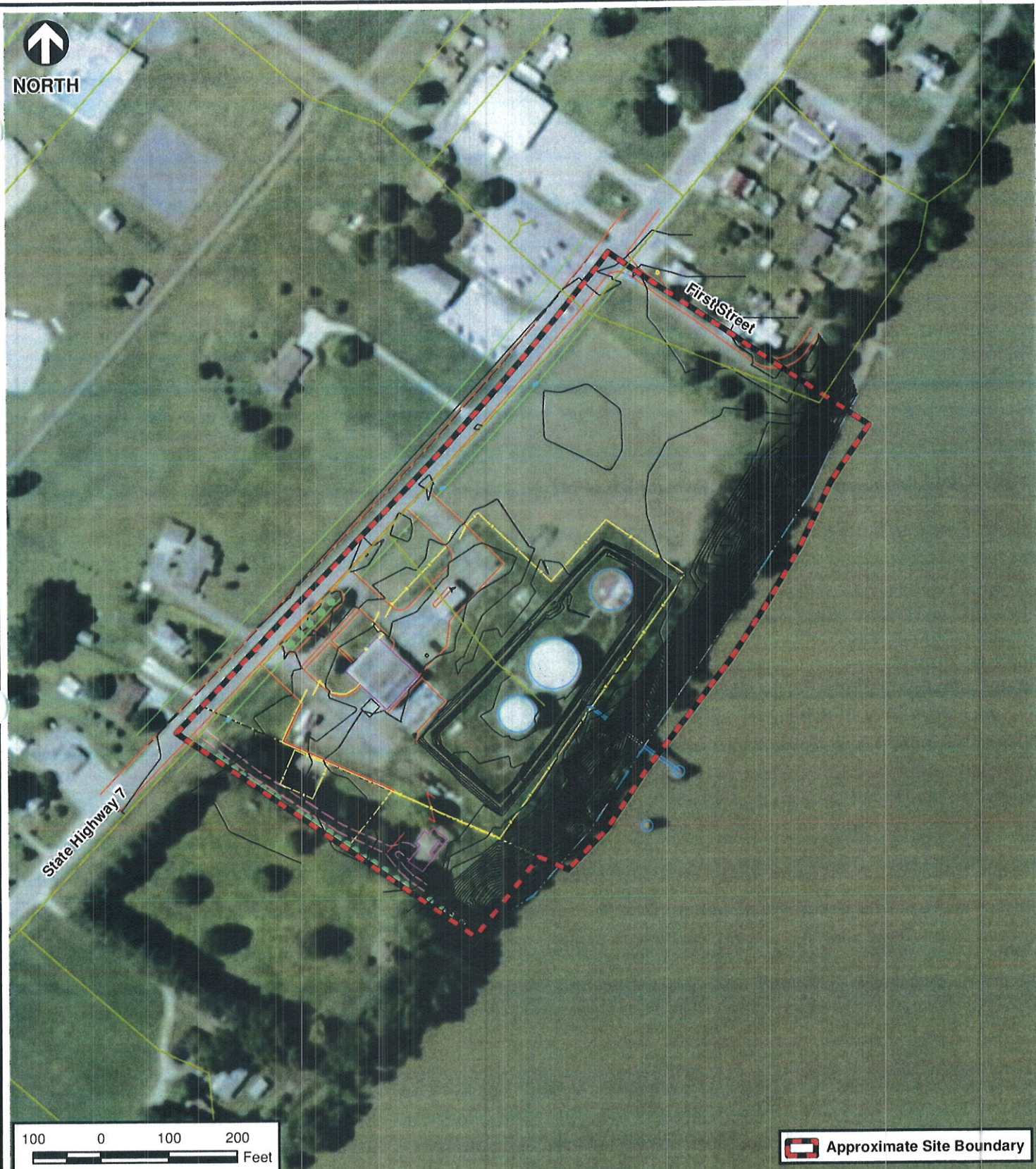
614-540-6633 - 888-598-6808

www.cecinc.com

WEAVERTOWN ENVIRONMENTAL GROUP
PRELIMINARY DUE DILIGENCE SERVICES
PROPOSED SOLID WASTE TRANSFER STATION
AND TANK STORAGE FACILITY
NEW MATAMORAS, OHIO

SITE LOCATION MAP

DRAWN BY:	MJB	CHECKED BY:	JSC	APPROVED BY:	RAS*	FIGURE NO:
DATE:	DECEMBER 20, 2011	DWG SCALE:	1" = 2,000'	PROJECT NO:	112-048	1



SOURCE: PORTION OF A NATIONAL AGRICULTURAL IMAGERY PROGRAM (NAIP) COLOR COUNTY AERIAL MOSAIC - WASHINGTON COUNTY, OHIO, 2009.
 EXISTING BASE FILE PROVIDED BY WEAVERTOWN ENVIRONMENTAL GROUP DRAWING NO. 9112D1. A.M.S.L. IS AN ABBREVIATION FOR ABOVE MEAN SEA LEVEL



Civil & Environmental Consultants, Inc.

8740 Orion Place, Suite 100 - Columbus, Ohio 43240
 614-540-6633 - 888-598-6808
www.cecinc.com

WEAVERTOWN ENVIRONMENTAL GROUP
 PRELIMINARY DUE DILIGENCE SERVICES
 PROPOSED SOLID WASTE TRANSFER STATION
 AND TANK STORAGE FACILITY
 NEW MATAMORAS, OHIO

SITE AND VICINITY AERIAL MAP

DRAWN BY: MJB	CHECKED BY: JSC	APPROVED BY: RAS*	FIGURE NO: 2
DATE: DECEMBER 20, 2011	DWG SCALE: 1" = 200'	PROJECT NO: 112-048	